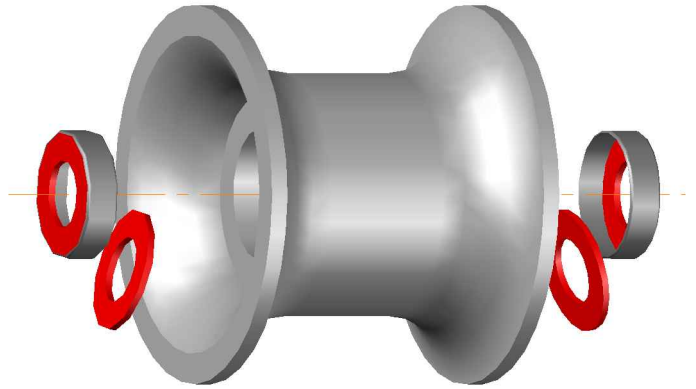


# SS Roller Maintenance Instructions

New SS Rollers are pre-loaded with grease (date should be noticeable).

When replacing bearings, remove the inside seal of each bearing allowing grease to fill cavity from the inside.



A new roller requires 25-30 pumps from a standard grease gun.

Be careful on the last few pumps not to blow the seal from either bearing.

**NOTE:**

**Bearings should be given 2 pumps of grease at the end of each trip to expel any water that may have forced its way past the seal.**



**YAQUINA BOAT EQUIPMENT**

508 BUTLER BRIDGE ROAD  
 TOLEDO PORT DOCK  
 (541) 336-5593 FAX (541) 336-5156



Name:		
Job#:	Date:	Scale:
Drawing Name: 7 Inch SS Roller Maintenance Instructions		
Drawn by:	Checked by:	

Sheet:

Of